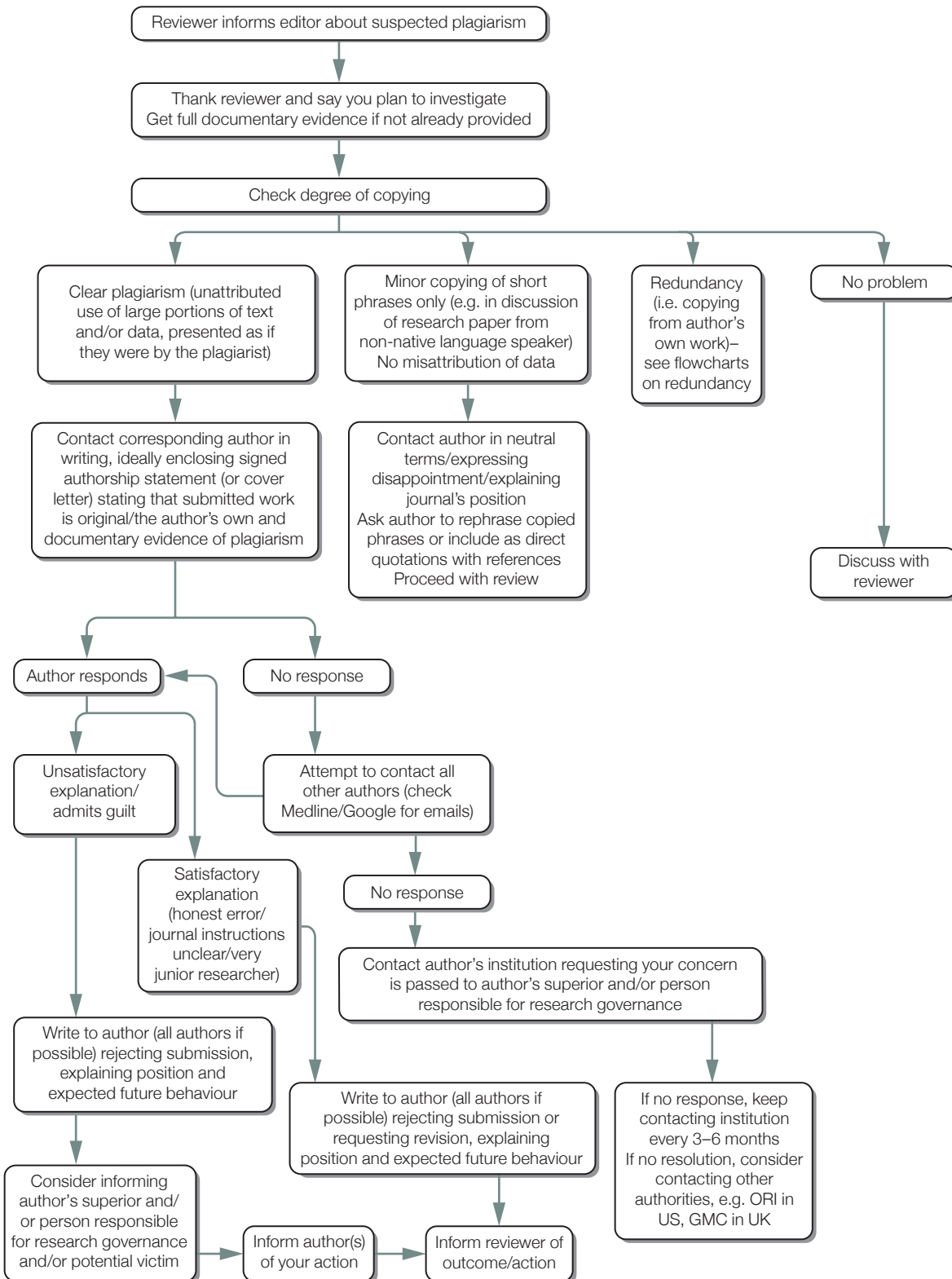


# What to do if you suspect plagiarism

## (a) Suspected plagiarism in a submitted manuscript



**Note**  
The instructions to authors should include a definition of plagiarism and state the journal's policy on it

Developed for COPE by Liz Wager of Sideview (www.lizwager.com) © 2013 Committee on Publication Ethics First published 2006

A non-exclusive licence to reproduce these flowcharts may be applied for by writing to: cope\_administrator@publicationethics.org