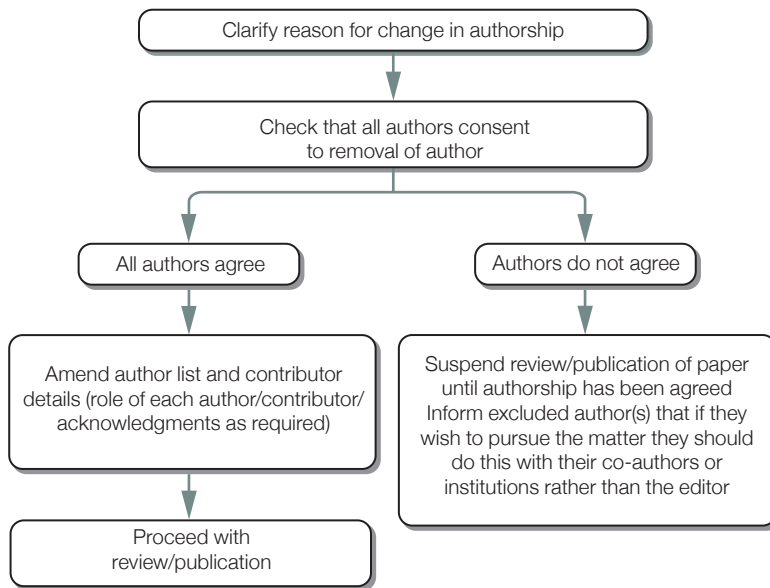


# Changes in authorship

## (b) Corresponding author requests removal of author before publication



**Note**  
Most important to check with the author(s) whose name(s) is/are being removed from the paper and get their agreement in writing

Developed for COPE by Liz Wager of Sideview ([www.lizwager.com](http://www.lizwager.com))  
© 2013 Committee on Publication Ethics  
First published 2006

A non-exclusive licence to reproduce these flowcharts may be applied for by writing to: [cope\\_administrator@publicationethics.org](mailto:cope_administrator@publicationethics.org)